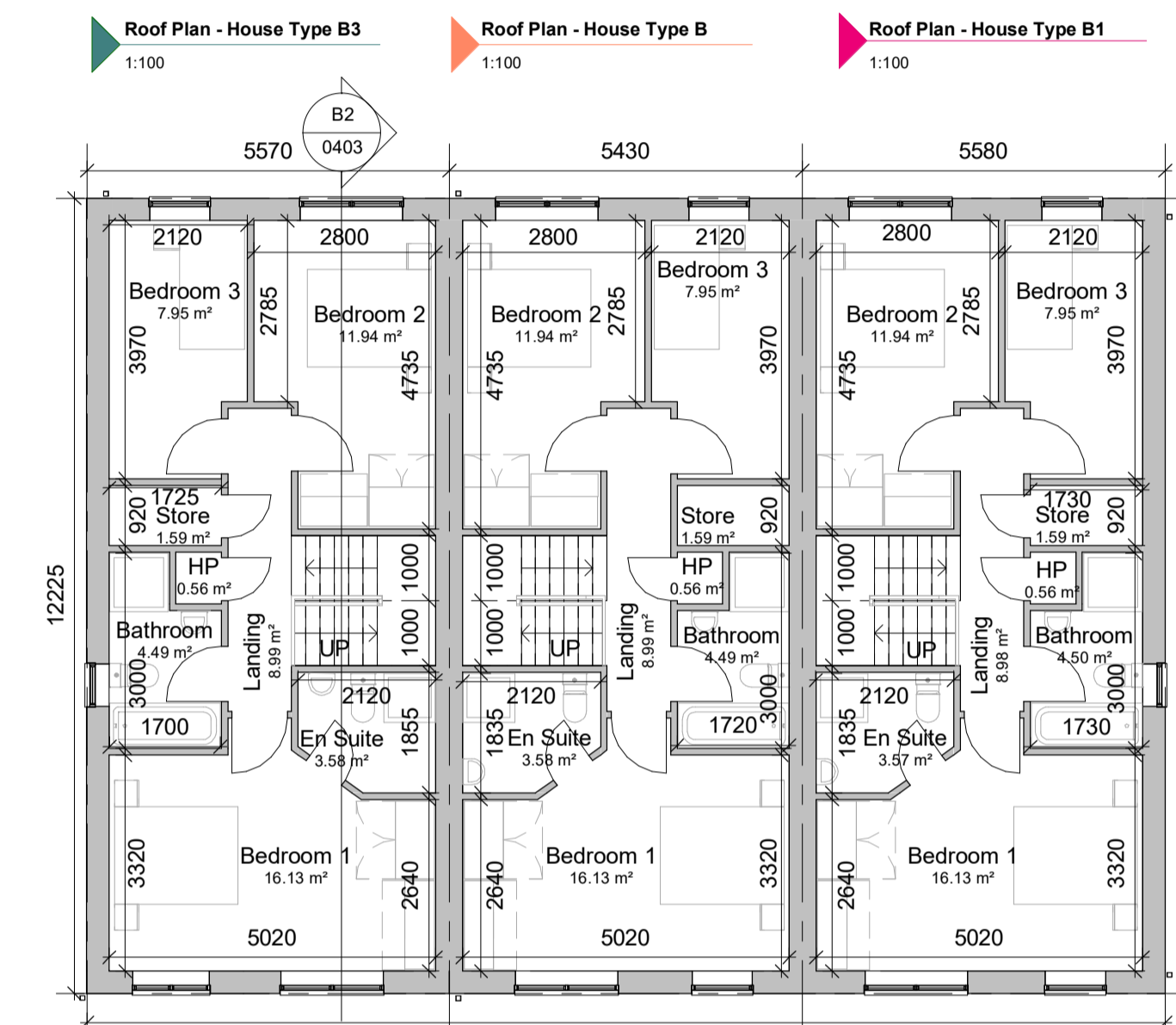
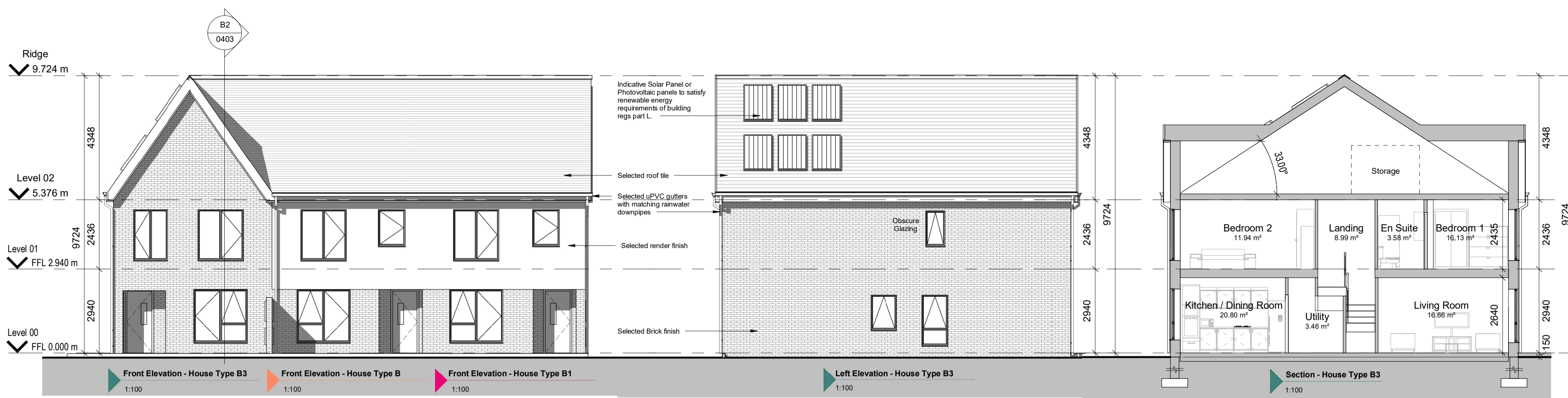
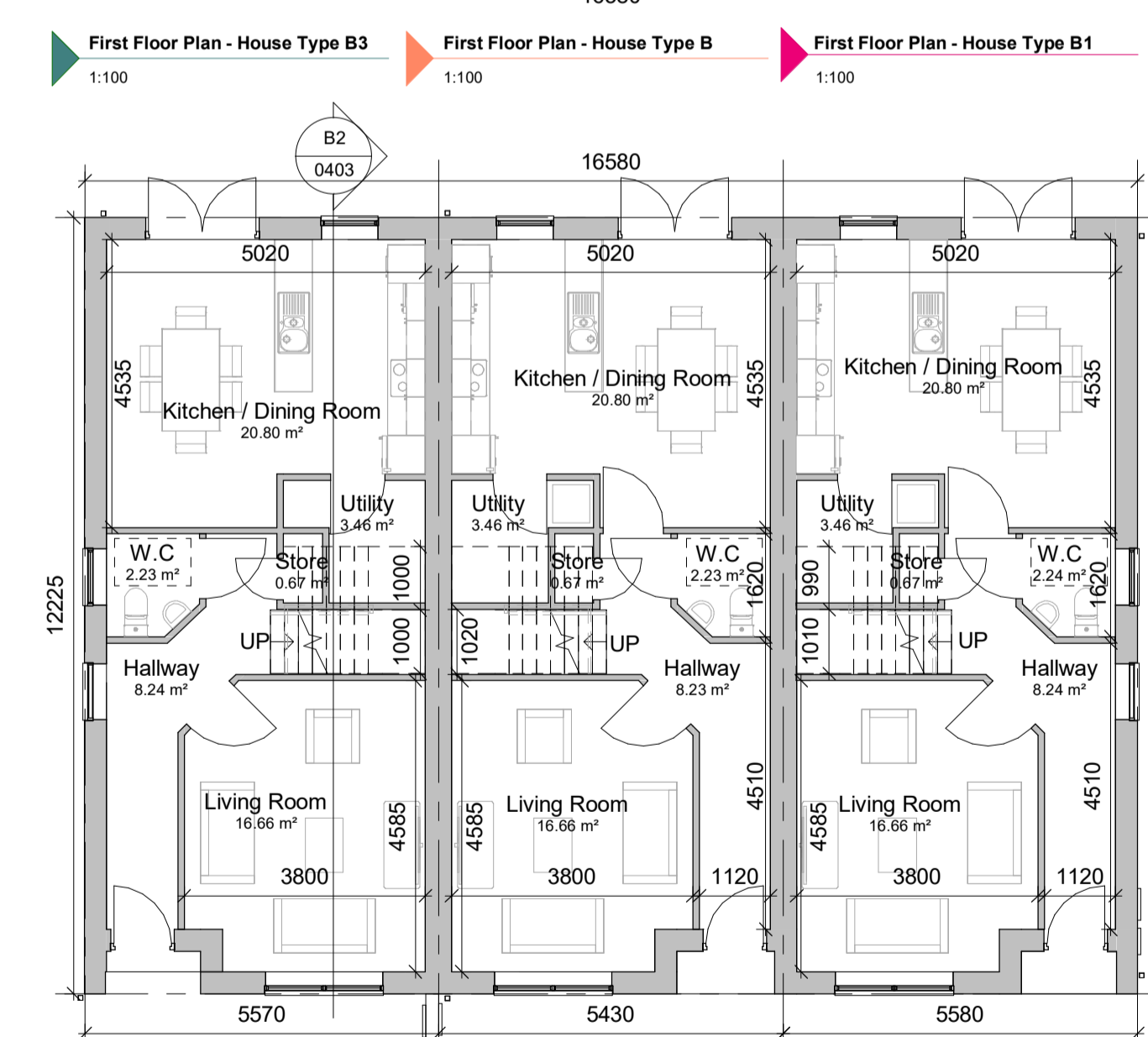
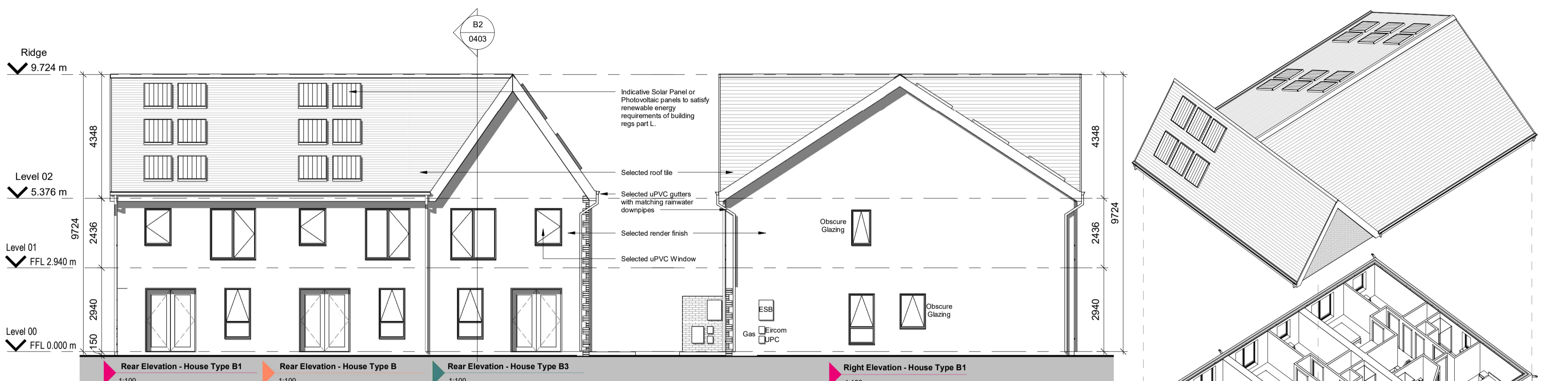


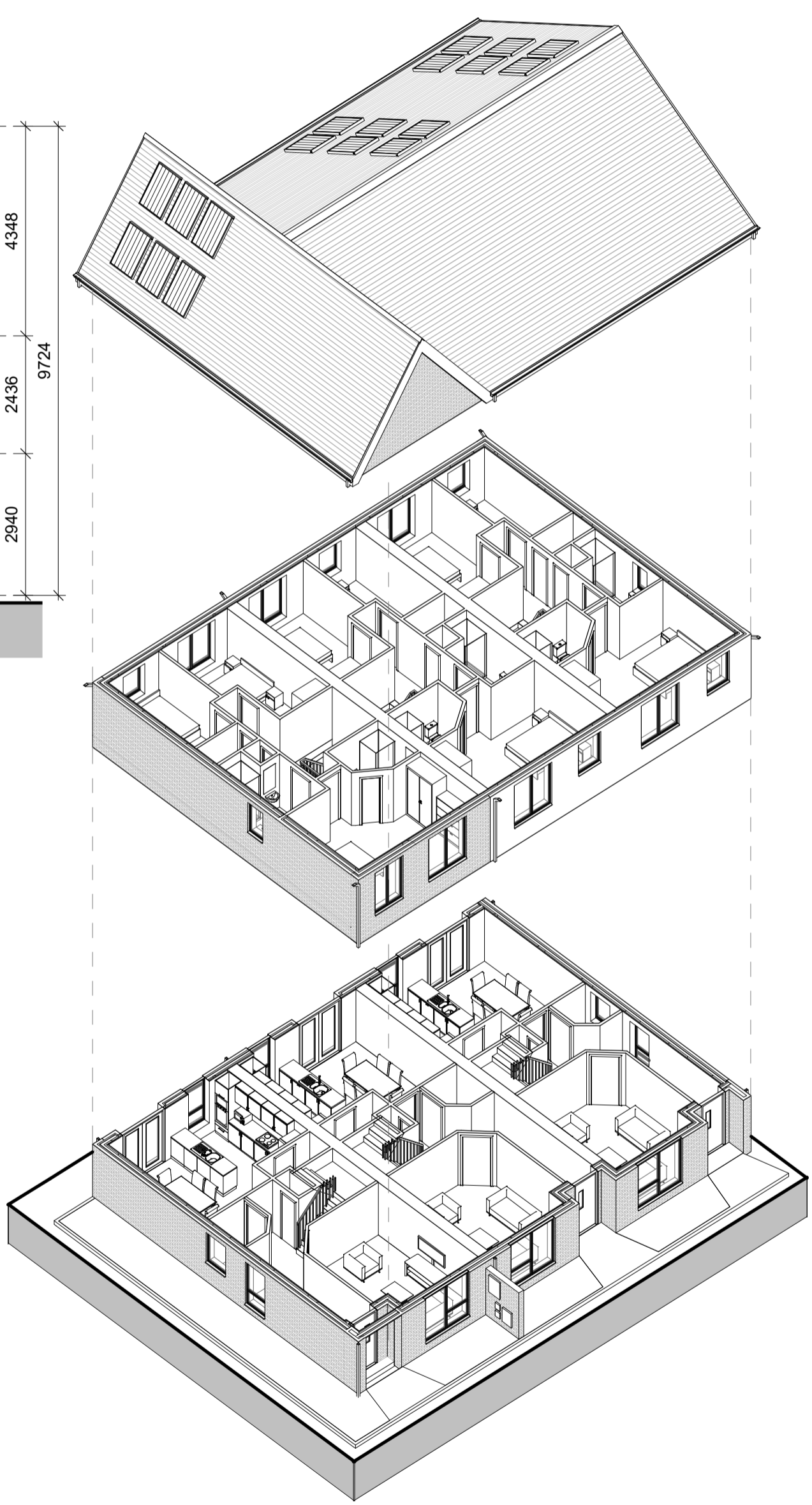
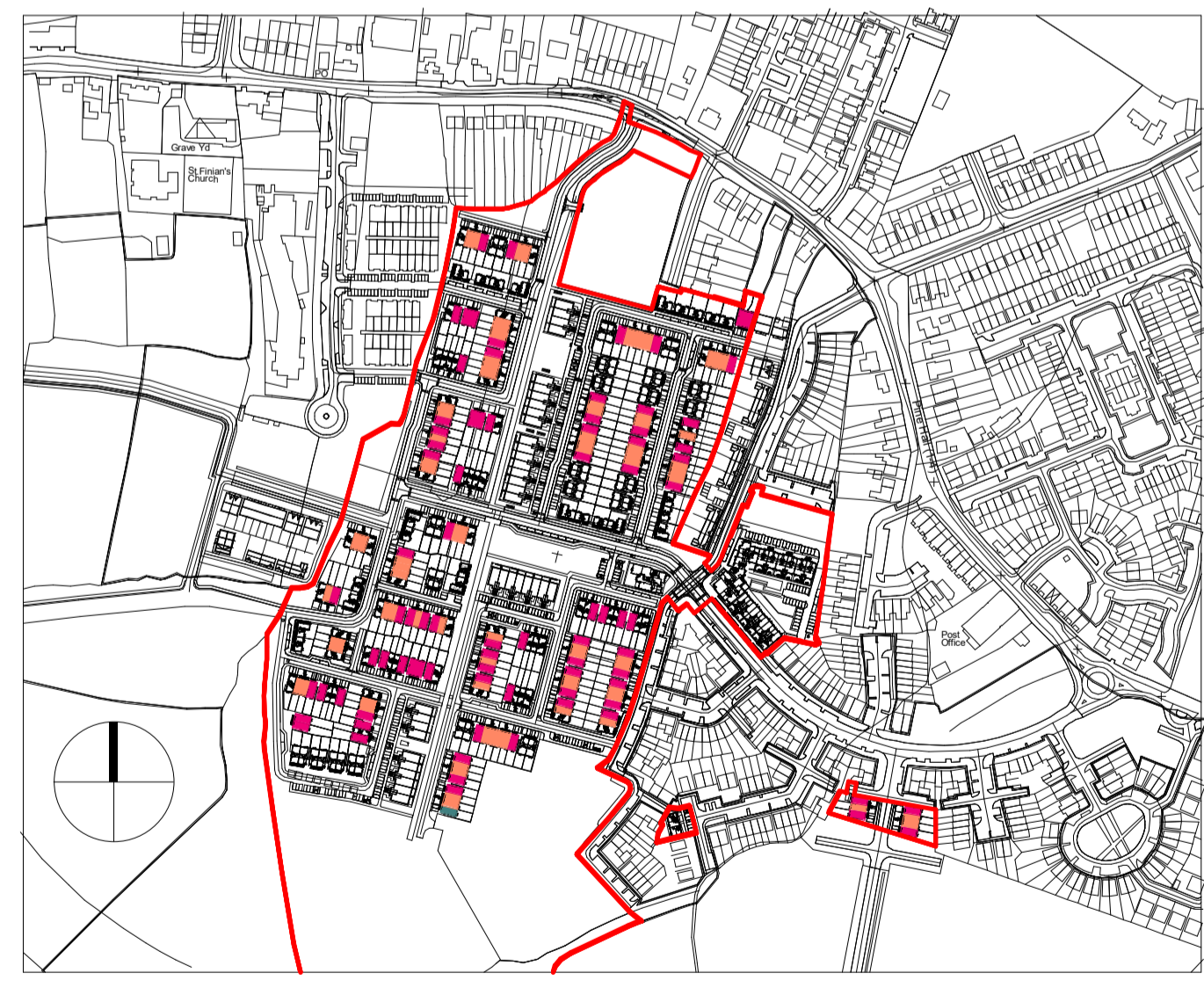
House Type B3 - 3No. Bedrooms	
Room Name	Room Area
<b>Level 00</b>	
Hallway	8.24 m <sup>2</sup>
Kitchen / Dining Room	20.80 m <sup>2</sup>
Living Room	16.66 m <sup>2</sup>
Store	0.67 m <sup>2</sup>
Utility	3.46 m <sup>2</sup>
W.C	2.23 m <sup>2</sup>
<b>Level 01</b>	
Bathroom	4.49 m <sup>2</sup>
Bedroom 1	16.13 m <sup>2</sup>
Bedroom 2	11.94 m <sup>2</sup>
Bedroom 3	7.95 m <sup>2</sup>
En Suite	3.58 m <sup>2</sup>
HP	0.56 m <sup>2</sup>
Landing	8.99 m <sup>2</sup>
Store	1.59 m <sup>2</sup>
Aggregate Living Area	37.46m2
Ground Floor GIFA	56.70m2
Aggregate Bed Area	36.02m2
First Floor GIFA	57.91m2
Attic Storage	2.80m2
Total Storage	8.52m2
<b>Total Floor Area = 114.61m2</b>	



House Type B - 3No. Bedrooms	
Room Name	Room Area
<b>Level 00</b>	
Hallway	8.23 m <sup>2</sup>
Kitchen / Dining Room	20.80 m <sup>2</sup>
Living Room	16.66 m <sup>2</sup>
Store	0.67 m <sup>2</sup>
Utility	3.46 m <sup>2</sup>
W.C	2.23 m <sup>2</sup>
<b>Level 01</b>	
Bathroom	4.49 m <sup>2</sup>
Bedroom 1	16.13 m <sup>2</sup>
Bedroom 2	11.94 m <sup>2</sup>
Bedroom 3	7.95 m <sup>2</sup>
En Suite	3.58 m <sup>2</sup>
HP	0.56 m <sup>2</sup>
Landing	8.99 m <sup>2</sup>
Store	1.59 m <sup>2</sup>
Aggregate Living Area	37.46m2
Ground Floor GIFA	56.70m2
Aggregate Bed Area	36.02m2
First Floor GIFA	57.91m2
Attic Storage	2.80m2
Total Storage	8.52m2
<b>Total Floor Area = 114.61m2</b>	



House Type B1 - 3No. Bedrooms	
Room Name	Room Area
<b>Level 00</b>	
Hallway	8.24 m <sup>2</sup>
Kitchen / Dining Room	20.80 m <sup>2</sup>
Living Room	16.66 m <sup>2</sup>
Store	0.67 m <sup>2</sup>
Utility	3.46 m <sup>2</sup>
W.C	2.24 m <sup>2</sup>
<b>Level 01</b>	
Bathroom	4.50 m <sup>2</sup>
Bedroom 1	16.13 m <sup>2</sup>
Bedroom 2	11.94 m <sup>2</sup>
Bedroom 3	7.95 m <sup>2</sup>
En Suite	3.57 m <sup>2</sup>
HP	0.56 m <sup>2</sup>
Landing	8.98 m <sup>2</sup>
Store	1.59 m <sup>2</sup>
Aggregate Living Area	37.46m2
Ground Floor GIFA	56.70m2
Aggregate Bed Area	36.02m2
First Floor GIFA	57.91m2
Attic Storage	2.80m2
Total Storage	8.52m2
<b>Total Floor Area = 114.61m2</b>	



NOTES / LEGEND

Key Plan:

Rev:	Date:	Description:	By:
1	01/09/2019	PLANNING ISSUE	MOLA

Drawing Status: Planning Application

Reply Address: 2 Donnybrook Road, Telephone +353 1 218 3900, Donnybrook, Dublin 4, Ireland, www.molaarchitecture.com

Notes: Do not scale. Use figured dimensions only. This drawing is to be read in conjunction with all relevant specifications and drawings. All dimensions to be checked on site. In the event of any discrepancies between drawings the contractor is to inform the Architect immediately.

**MOLA**  
ARCHITECTS ■ PLANNERS ■ URBAN DESIGNERS ■

Client: Cairn Homes Properties Ltd.  
Project: Newcastle South  
Drawing: House Type B / B1 / B3  
Date: 01/09/2019 Scale: As Indicated Drawn By: CJ Approved By: NN Int. Job No: 18001  
Project No: NCS18- MOLA-00- ZZ- DR- A- XX 0403 P 1  
© COPYRIGHT This drawing or design may not be reproduced without permission